

maeg

GARIBALDI COMPLEX

BUILDINGS AND SPECIAL STRUCTURES

- HOSPITALITY AND OFFICES

GARIBALDI COMPLEX

Location

Milan, Italy

Client

Beni Stabili S.p.A.

Contractor

Impresa Costruzioni Giuseppe Maltauro S.p.A.

Scope of work

Design, fabrication and installation of steel structures

Period of execution

2012

Weight

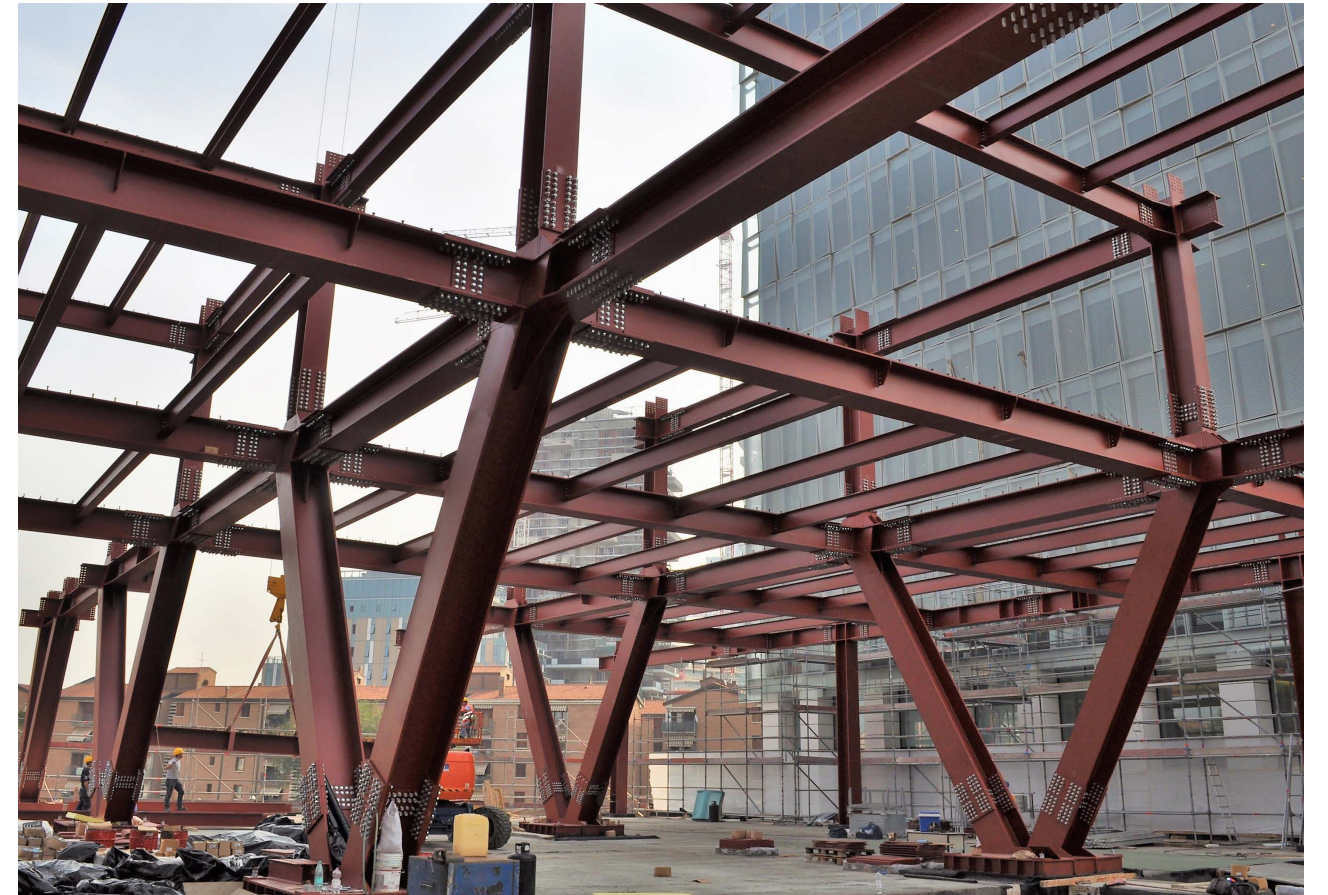
1.150 tons

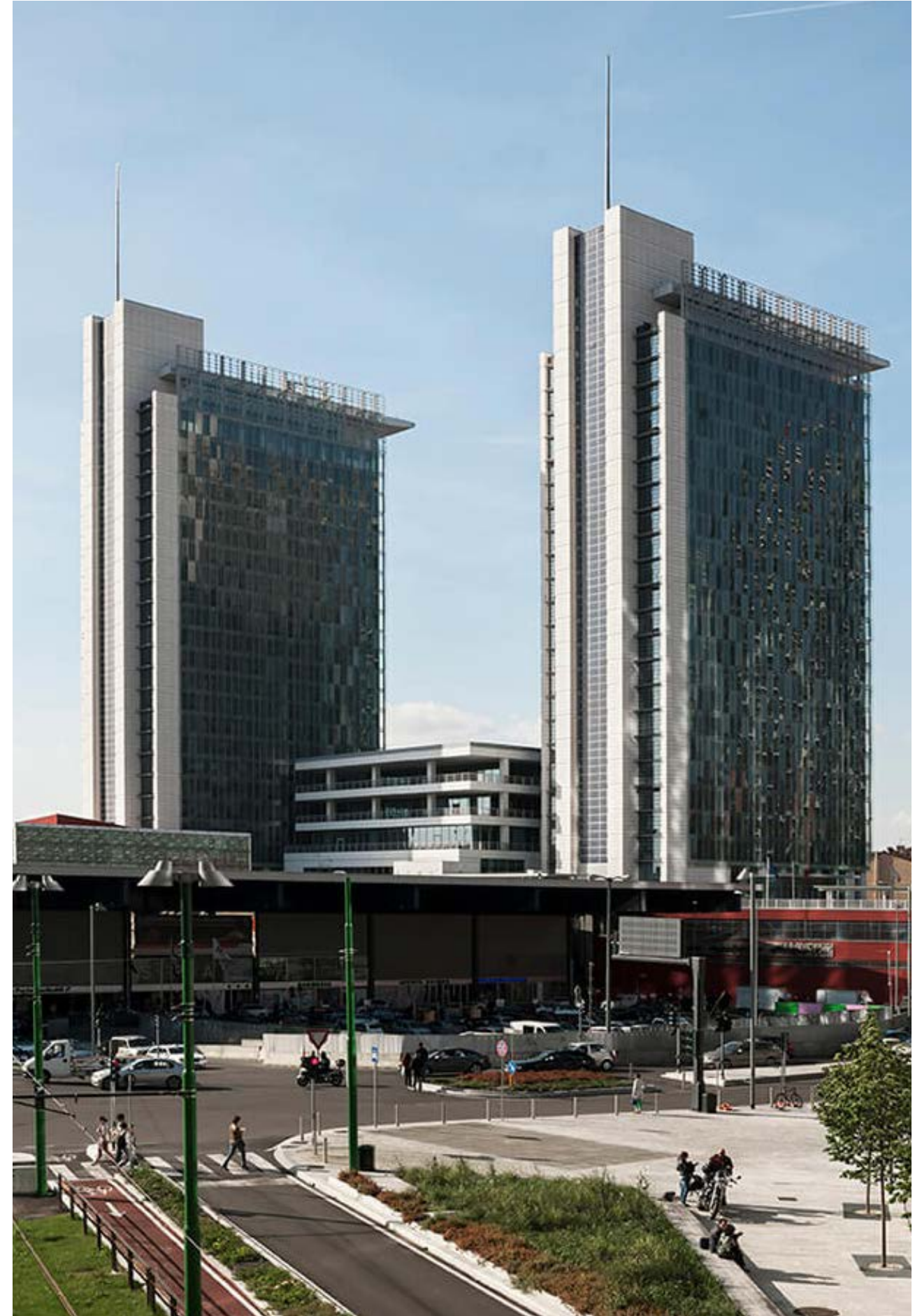
Garibaldi towers characterize the skyline of Milan since 1984. In 2008 they have undergone a process of renovation including a new body “C” between the two towers, made entirely of steel and hosting common spaces and recreational areas.

The new C body between the towers of the Garibaldi complex has been realized above an already existing two-floors building made of reinforced concrete, which include the terminal of the Porta Garibaldi railway station, which has not been stopped during the construction period. The new building has four floors entirely made of steel, with a total weight of 1.150 tons. On the first floor there are V-shaped pillars with an inclination of 45 degrees halving the required span on the floors above while generating a strong architectural impact. Because of

contractual commitments, the C body has been completed in less than six months and, to reduce time and costs, double-T welded profiles have been used.









Ideas
shape
the
World

Maeg Costruzioni S.p.A.
Via Toniolo 40
31028, Vazzola (TV) - Italy
+39 0438 441558
www.maegspa.com